

# Single Port Lung Cancer Surgery

Mansi Shah, MD

Surgery Clerkship Director

Assistant Professor of Thoracic Surgery

# Non-Disclosure Statement:

- I have nothing to disclose

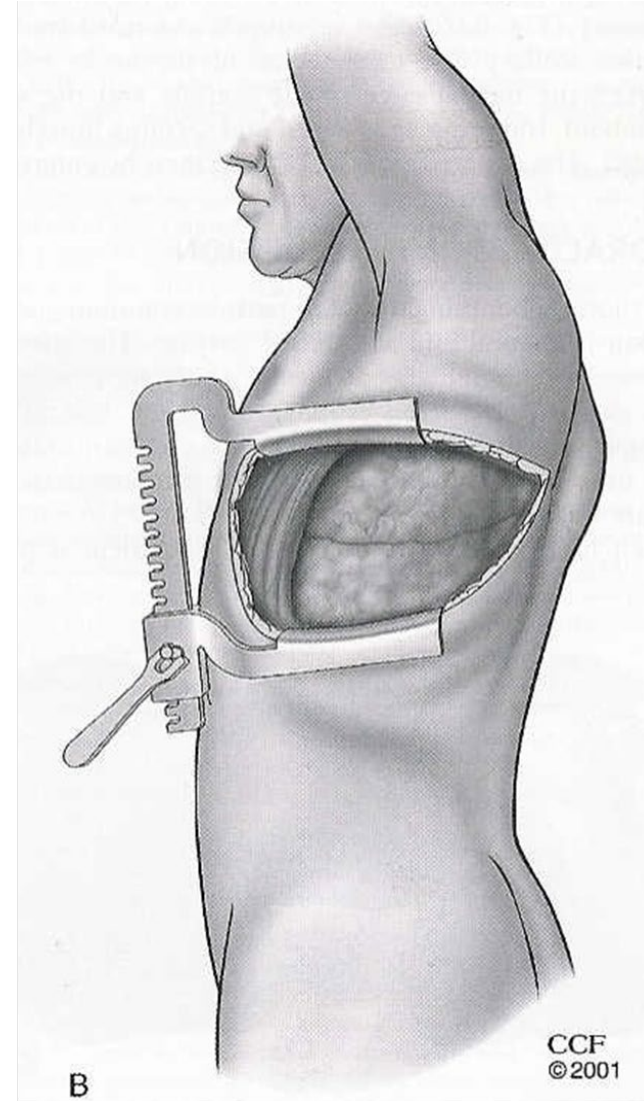
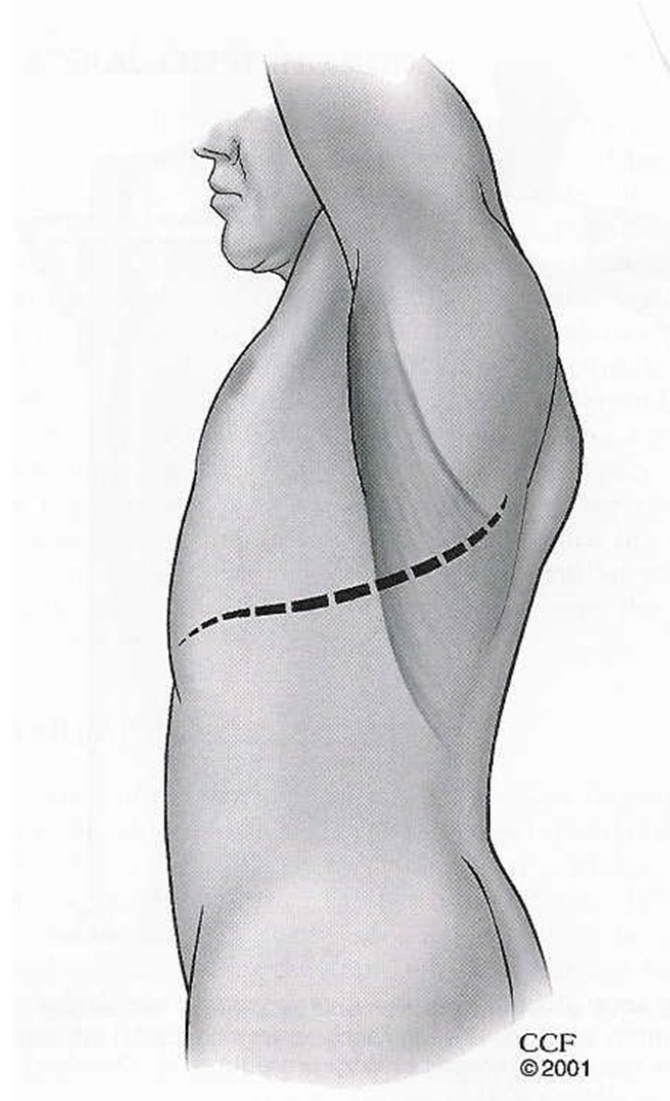


# Learning Objectives:

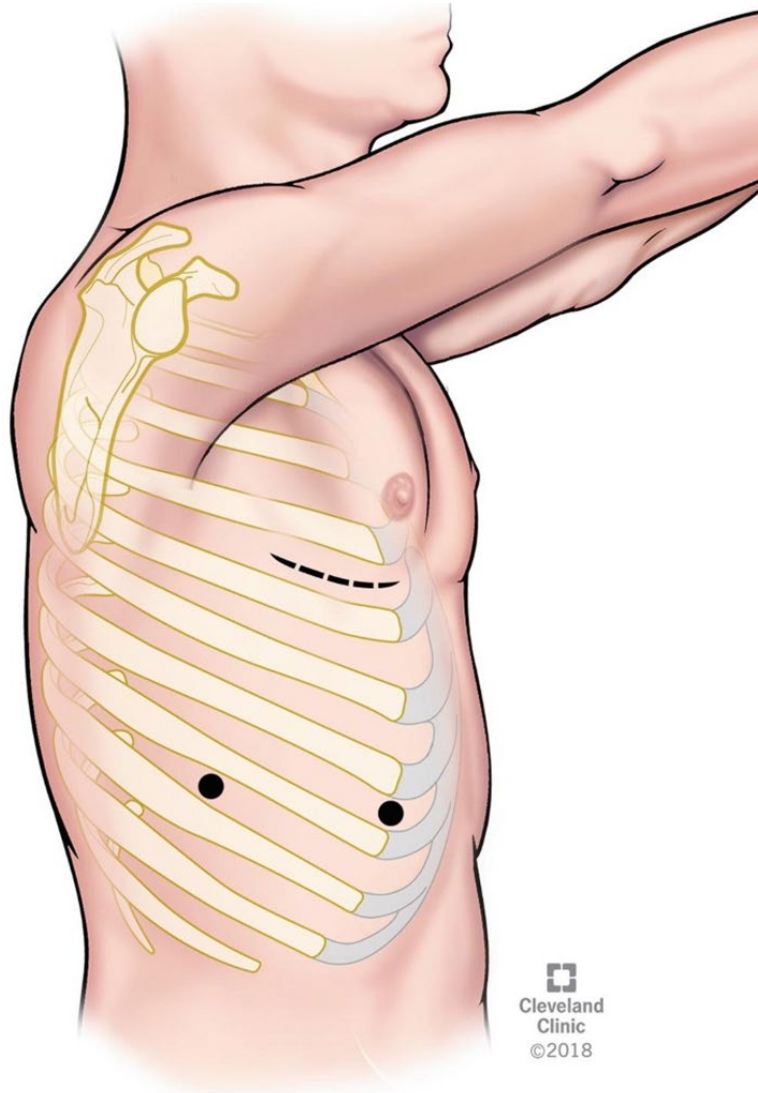
- Describe new technologies and innovations in lung cancer surgery.
- Discuss the impact and implications of these advances for patients.



# Evolution of Lung Cancer Surgery: Thoracotomy

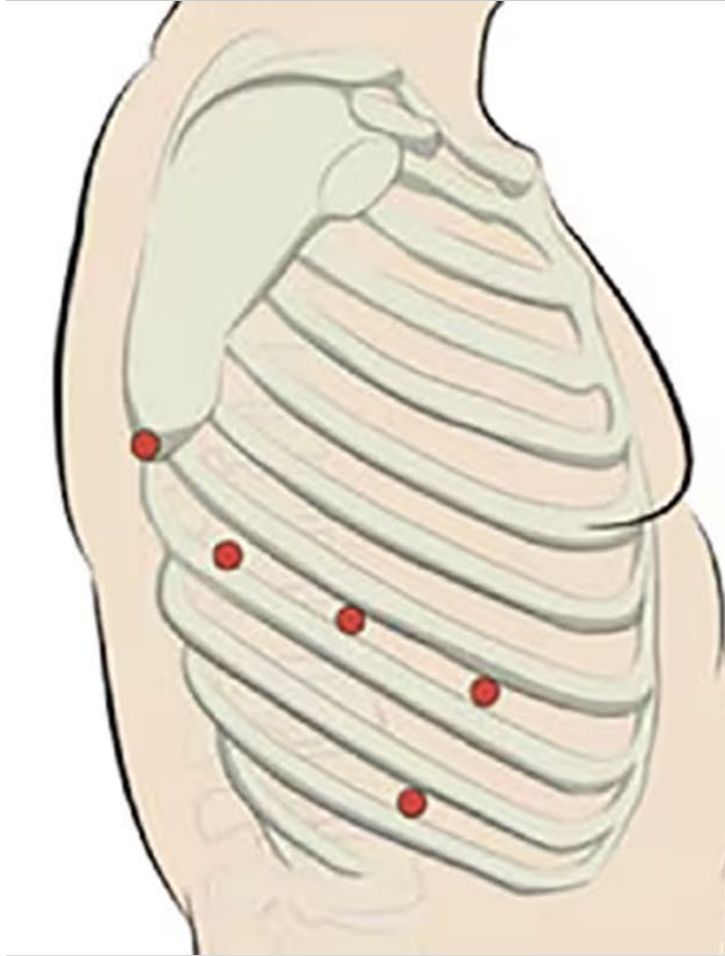


# Evolution of Lung Cancer Surgery: VATS (Video Assisted Thoracic Surgery)



# Evolution of Lung Cancer Surgery:

## Robotic Surgery: Multiport



# What's the Difference?

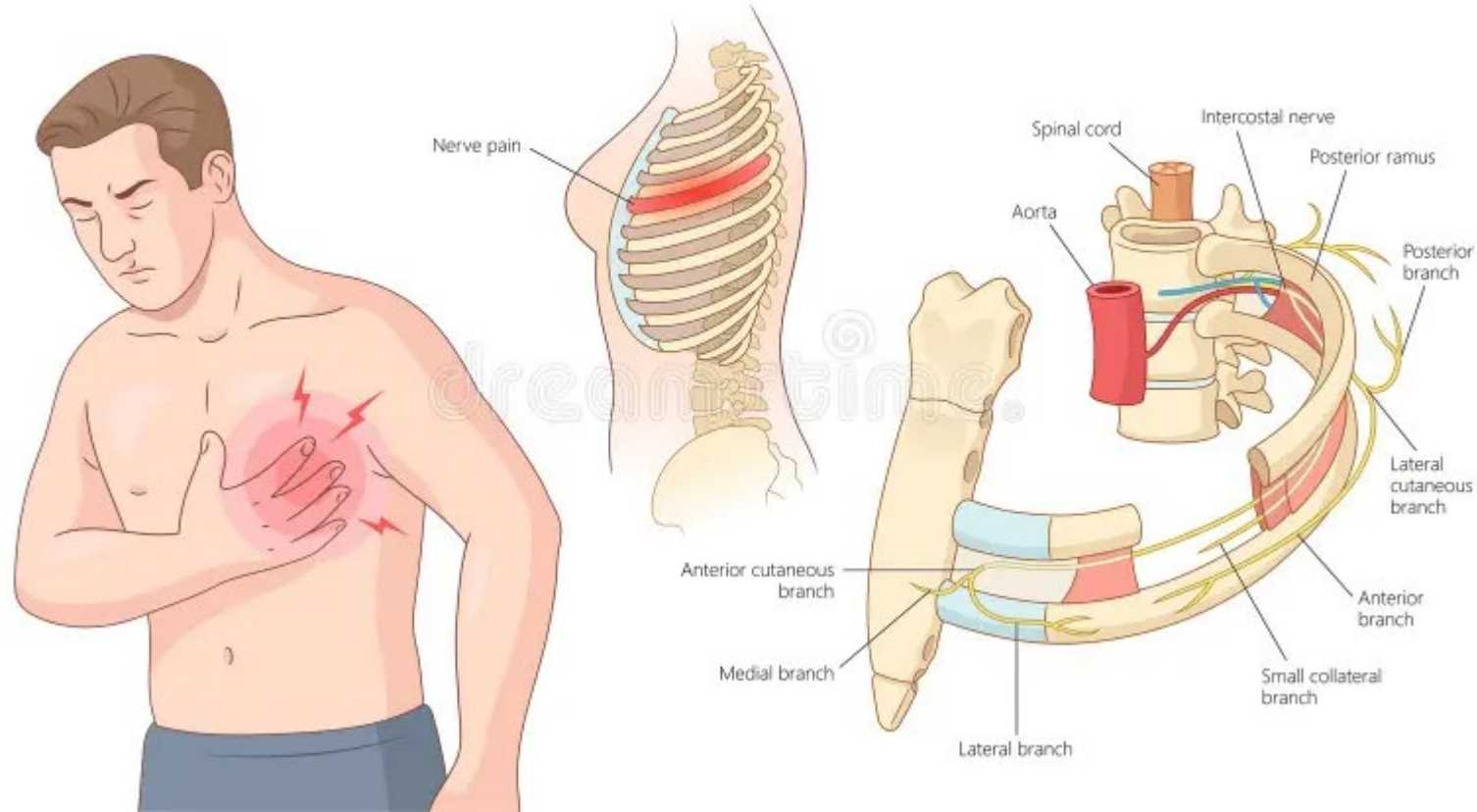
Approach	Hospital Stay	ICU Stay	Pain	Chronic Pain	Efficacy
Thoracotomy	4-6 days	0-2 days	++++	>10%	++++
VATS	1-2 days	none	+	<1%	++++
RATS	1-2 days	none	+	<1%	++++





# Can We Do Better?

## Intercostal Neuralgia





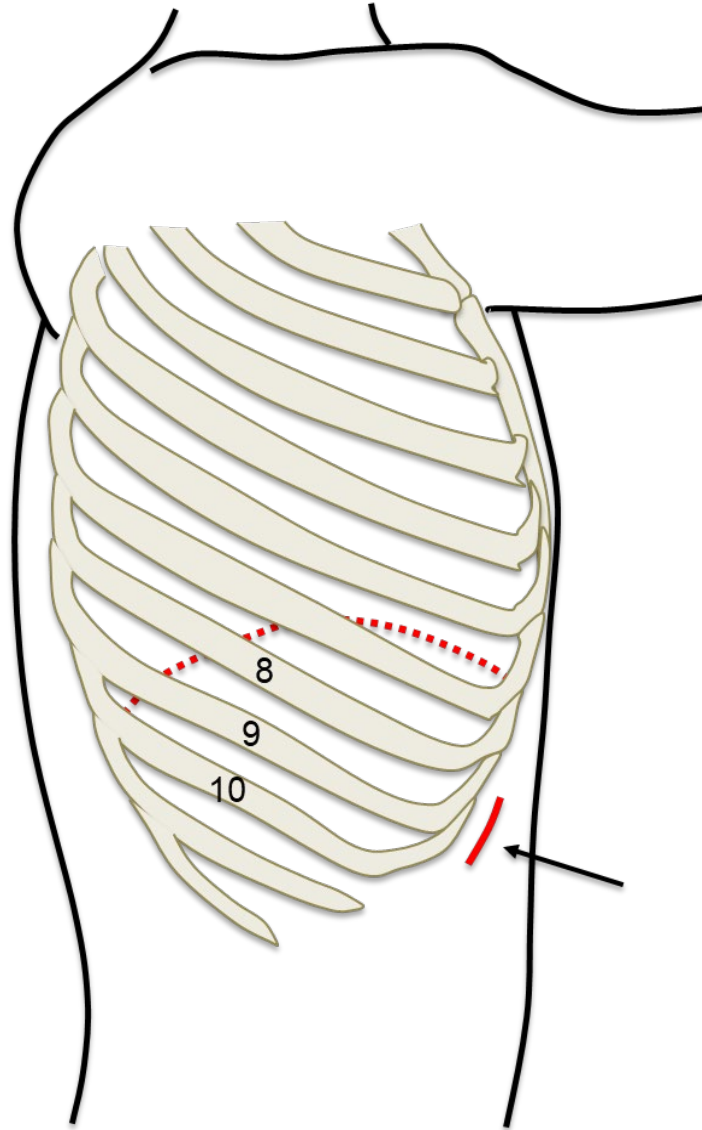
# Evolution of Lung Cancer Surgery:

## Robotic Surgery: Single Port



# Evolution of Lung Cancer Surgery:

## Robotic Surgery: Single Port



- Single 4 cm incision
- Subcostal space – outside of the intercostal space
- Less risk of intercostal nerve pain

# Impact

- More than half of patients have not used any narcotics after discharge home
- Zero gabapentin (unless using preoperatively) use during hospitalization or after
- Equivalent length of stay
- Equivalent lymph node yield

